

200 Base Pair DNA Ladder

Catalog # L-102

Lot: 2

Quantity Supplied: 300 ul at 1 ul per loading (300 loadings)

Storage Buffer: 10 mM Tris-HCl, 1 mM EDTA, pH 8.0 (TE buffer)

Store at -20 °C or below.

Repeated freeze-thaw cycles have no effect on this product. Vortex gently after thawing.

Description: This ladder consists of 33 blunt end DNA bands at exactly 200 bp to 6,600 bp in 200 bp increments. The high intensity 1,000 bp band facilitates band identification. G+C content of the bands is 48%.

Recommended Use: Make a Working Solution of the ladder in the tube labeled "Working Solution" as follows:

200 ul 5X sample loading buffer

750 ul TE buffer

50 ul ladder stock solution

A common 5X sample loading buffer is 40 mM Tris-OAc, 1 mM EDTA, pH 8.0, 0.05% bromophenol blue, 50% glycerol. Load 20 ul of the Working Solution on the gel. (This is equivalent to loading 1 ul of the Stock Solution on the gel). Bands can be visible by ethidium bromide staining. The Working Solution may be stored at 4 °C for a few months. For long term storage, store the Working Solution at -20 °C or below. Store the Stock Solution at -20 °C or below.

Tips for Achieving the Best Results:

(1) For best resolution from 200 bp to 2,000 bp, use a high sieving agarose (such as 2.0% metaphor agarose). For best resolution from 1,000 bp to 6,600 bp, use 1.0% agarose.

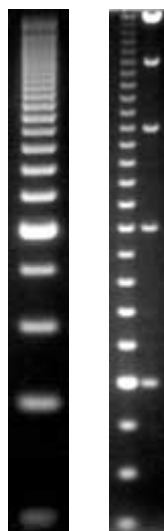
(2) Fill the gel well completely. A partially filled well may result in band smearing.

Copyright and Patent Protected. All rights reserved. This genetic material is protected by U.S. and international copyright and patent law, 1996. This genetic material cannot be replicated without written consent. US Patents 5840575 and 5939293. Made in USA by Edward Hyman

BAYOU BIOLABS

4724 Hessmer Avenue, Metairie, LA, 70002, USA

tel 504-723-1703, www.bayoubiolabs.com, support@bayoubiolabs.com



Left: 2% metaphor agarose gel showing bands from 200 bp to 3,000 bp

Right: 1% agarose gel showing bands from 400 bp to 6,600 bp. The right lane is our 1 kilobase DNA ladder (L-201).