

# 100 Base Pair DNA Ladder

Catalog # L-101

Lot: 4

Quantity Supplied: 300 ul at 1 ul per loading (300 loadings)

Storage Buffer: 10 mM Tris-HCl, 1 mM EDTA, pH 8.0 (TE buffer)

Store at -20 °C or below.

Repeated freeze-thaw cycles have no effect on this product. Vortex gently after thawing.

**Description:** This ladder consists of forty blunt end DNA bands at exactly 100 bp to 4,000 bp in 100 bp increments. Two features of the ladder facilitate band identification: (1) A high intensity 500 bp band, and (2) Bands from 1,000 bp to 4,000 bp are more intense than bands from 100 bp to 900 bp. G+C content of the bands is 48%.

**Recommended Use:** Make a Working Solution of the ladder in the tube labeled "Working Solution" as follows:

200 ul 5X sample loading buffer

750 ul TE buffer

50 ul ladder stock solution

A common 5X sample loading buffer is 40 mM Tris-OAc, 1 mM EDTA, pH 8.0, 0.05% bromophenol blue, 50% glycerol. Load 20 ul of the Working Solution on the gel. (This is equivalent to loading 1 ul of the Stock Solution on the gel). Bands can be visible by ethidium bromide staining. The Working Solution may be stored at 4 °C for a few months. For long term storage, store the Working Solution at -20 °C or below. Store the Stock Solution at -20 °C or below.

**Tips for Best Results:**

(1) For best resolution of 100 bp to 1,500 bp bands, use a high sieving agarose (such as 2% metaphor agarose). For best resolution of 500 bp - 4,000 bp bands, use 1% agarose. Resolving fragments above 3,000 bp requires running a 20 cm length 1% agarose gel.

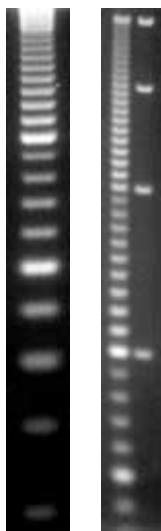
(2) Fill the gel well completely. A partially filled well may result in band smearing.

**Copyright and Patent Protected.** All rights reserved. This genetic material is protected by U.S. and international copyright and patent law, 1996. This genetic material cannot be replicated without written consent. US Patents 5840575 and 5939293. Made in USA by Edward Hyman

## BAYOU BIOLABS

4724 Hessmer Avenue, Metairie, LA, 70002, USA

tel 504-723-1703, [www.bayoubiolabs.com](http://www.bayoubiolabs.com), [support@bayoubiolabs.com](mailto:support@bayoubiolabs.com)



**Left:** 2% metaphor agarose gel showing bands from 100 bp to 2,000 bp.

**Right:** 1% agarose gel showing bands from 400 bp to 4,000 bp. The right lane is our 1 kilobase DNA ladder (L-201).